



## IMPERIAL WORKS, FOUNTAYNE RD, LONDON N15



RENT £ 3,000 PCM



SIZE 1,410 SQFT

Creative  
WORKSPACE

**RATES** INTERESTED PARTIES ARE ADVISED TO MAKE THEIR OWN ENQUIRIES TO THE LOCAL AUTHORITY.

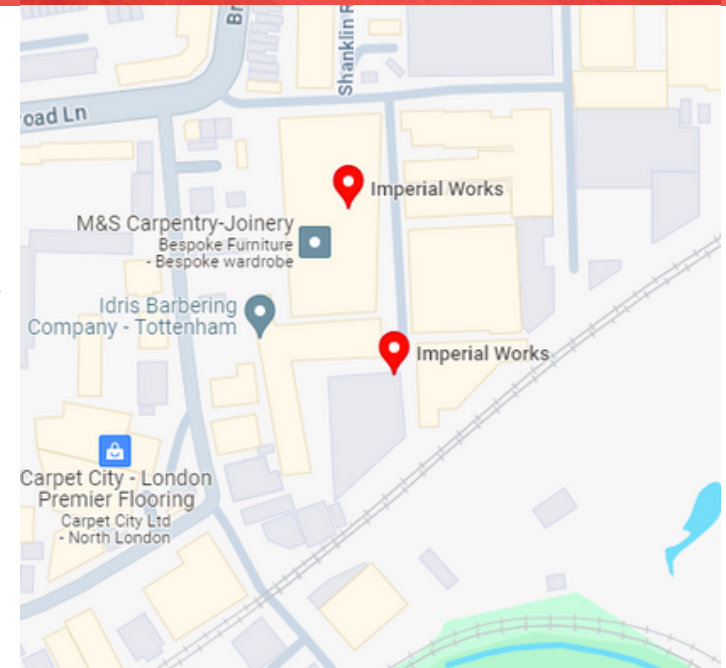
**VAT** NO

**TERMS** TO BE LET A NEW LEASE FOR A TERM TO BE AGREED.

**LEGAL COST** EACH PARTY TO BEAR THEIR OWN LEGAL COSTS.

**EPC RATING** TBC

**VIEWING** PLEASE CONTACT US

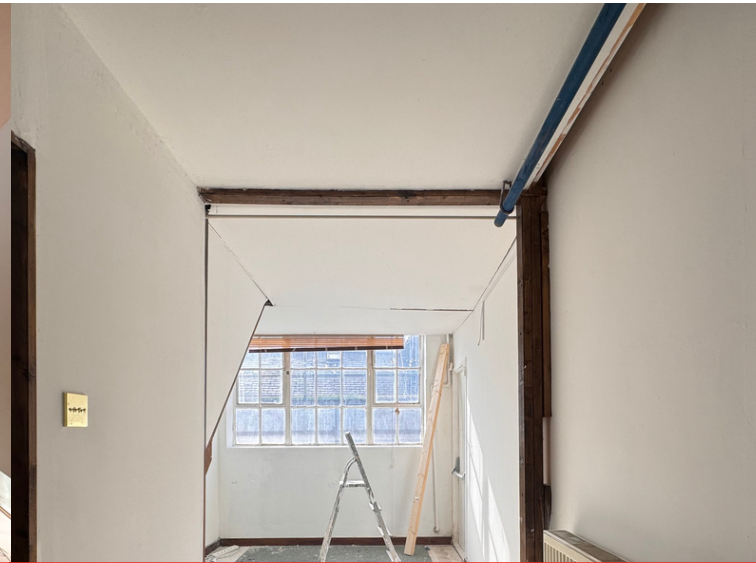




## ABOUT THE PROPERTY

- Experience creativity at its finest in Imperial Works, located at Fountayne Rd, London N15. This property boasts spacious interiors, including open areas, a hallway, and a bathroom.
- A mere 5-minute stroll from Stamford Road Bus Station, and just a 4-minute drive to Seven Sisters underground station or 3 minutes to Tottenham Hale station.
- Immerse yourself in the dynamic neighborhood, with attractions like Markfield Beam Engine and Museum, Tottenham Hale Retail Park, and the serene Richard Woolley Bird Hide nature reserve.

Contact us for more information and to schedule a viewing.



IMPERIAL WORKS, FOUNTAYNE RD,  
LONDON N15

Creative  
WORKSPACE



SEVEN  
SISTERS &  
TOTTENHAM  
HALE  
STATION



STAMFORD  
ROAD



RICHARD  
WOOLLEY  
BIRD HIDE  
NATURE  
RESERVE

## Get in touch!



0203-935-4544



[www.vibewarehouses.co.uk](http://www.vibewarehouses.co.uk)



Harvest House, London, E5 9LU



[info@vibewarehouses.co.uk](mailto:info@vibewarehouses.co.uk)



Misdescriptions Act 1991

Whilst every effort has been made to ensure the accuracy of these particulars they are in no way guaranteed and do not and will not constitute any part of a contract or any other form of agreement. No liability shall attach to Arbor Group Ltd trading as Vibe warehouses or its representatives in relation to anything stated or committed from these particulars. All prospective lessees purchasers are invited to and expected to inspect the property to check the accuracy of these particulars and to seek appropriate advice from their surveyors and/or solicitor.