



CREATIVE WORKSPACE

600-1200 SQ FT

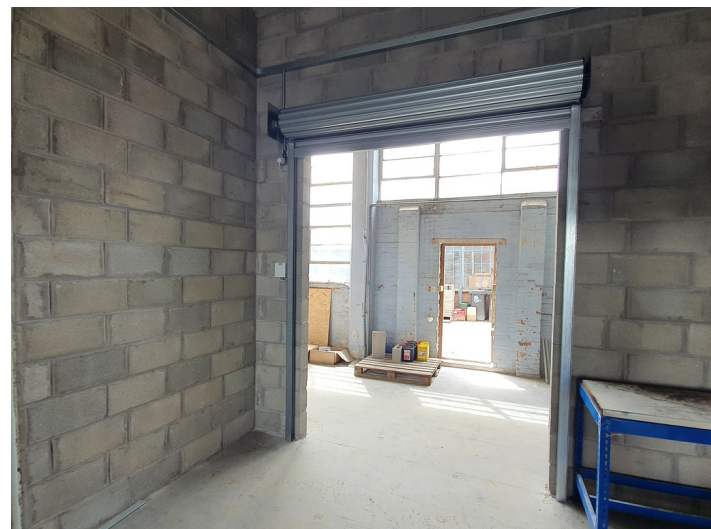
Regent Works Studios, Chatfield Place, Stoke-On-Trent, ST3 1LZ

TO LET



LOCATION

Stoke Spaces are located in Chatfield Place, Stoke-on-Trent and has instant access to the A50, which provides access to the A500, M6, J15 and J16.





CREATIVE WORKSPACE

600-1200 SQ FT

Regent Works Studios, Chatfield Place, Stoke-On-Trent, ST3 1LZ

TO LET



THE PROPERTY

Stoke Spaces is a brand new regeneration project nestled on its own 26,000 square ft of private land consisting of multiple industrial units converted into small, medium and large creative units.

Stoke Spaces are the conversion of a commercial building to offer a number of workshops and studio spaces over the ground and first floors.

The ground floor spaces benefit from roller shutter or double door access which ideally suits goods in and goods out the type of operation. In addition, the first floor has a loading area allowing pallet truck access.

These large work spaces are excellent for artists, creative individuals, light industrial workshops and small businesses.

RENT

Starts £80 per week

RATES

TBC

VAT

VAT may be applicable.

FLOOR AREA

600-1200 sq ft

TERMS

TBC

LEGAL COST

Each party to bear their own legal costs.

EPC

Rating: TBC

VIEWING

Please contact us.

FEATURES



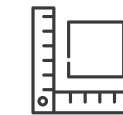
3-Phase Power



Kitchen



WCs



600-1200 sqft



Workshop Area



Led Lights