



LAND
1956 SQ FT

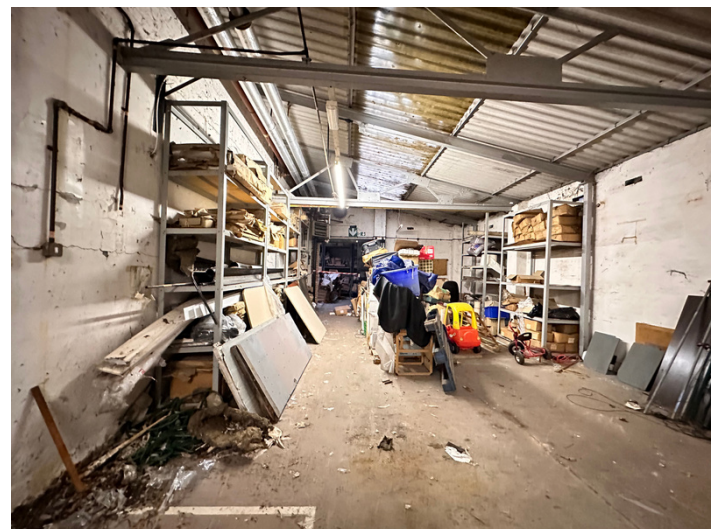
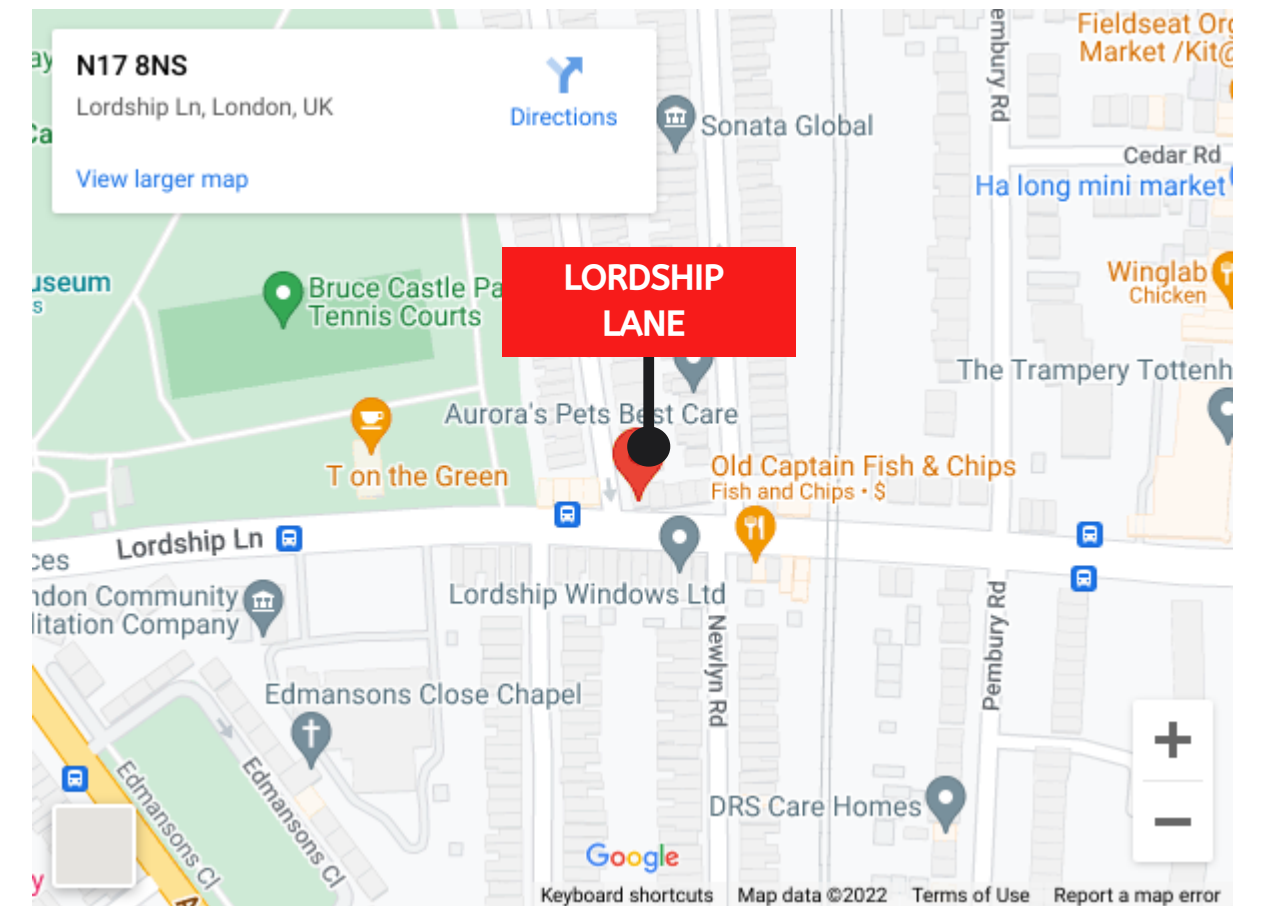
Lordship Lane, London N17 8NS

TO LET



LOCATION

The local area is well served by London Transport bus and underground services, with Bruce Grove Station within short walking distance.





LAND
1956 SQ FT

Lordship Lane, London N17 8NS

TO LET



THE PROPERTY

The local area is well served by London Transport bus and underground services, with Bruce Grove Station within short walking distance.

Served by excellent road communications being 0.2 mile from the A10.

Five minutes by walking to the Bruce Castle Park.

The land is closely located to amenities such as shops, restaurants and coffee shops.

RENT

£1,200 per month

RATES

TBC

VAT

VAT may be applicable.

FLOOR AREA

1956 sq ft

TERMS

TBC

LEGAL COST

Each party to bear their own legal costs.

EPC

Rating: TBC

VIEWING

Please contact us.