



SHOP
1854.81 SQ FT

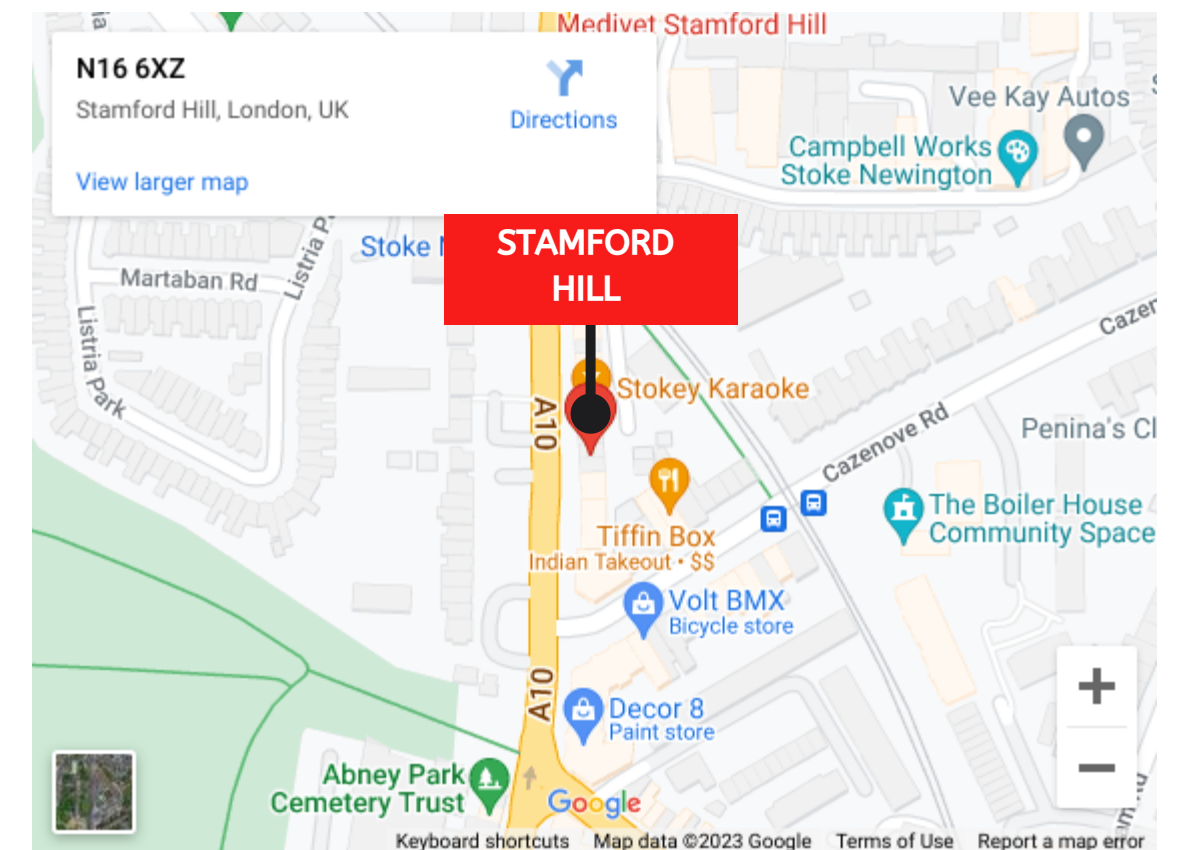
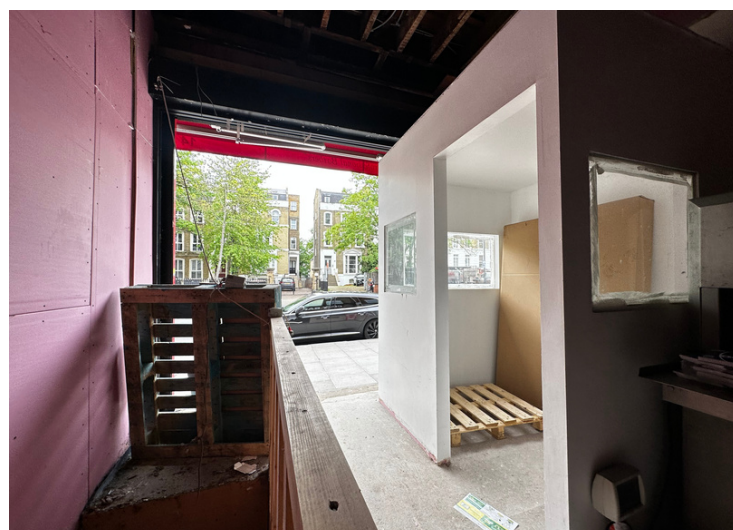
Stamford Hill, London, N16

TO LET



LOCATION

The local area is well served by London Transport bus and underground services, with Stoke Newington station within short walking distance.





SHOP
1854.81 SQ FT

Stamford Hill, London, N16

TO LET



THE PROPERTY

This large shop is excellent for small businesses, take away and restaurant.

The unit is on the high street.

The unit is closely located to amenities such as shops, restaurants and coffee shops.

The local area is well served by London Transport bus and underground services, with Stoke Newington station within short walking distance.

Just a ten-minute by walking to Abney Park

The shop is suitable for a commercial kitchen.

RENT

£1,500 per month

RATES

Interested parties are advised to make their own enquiries to the local Authority.

VAT

VAT may be applicable.

FLOOR AREA

1,855 sq ft

TERMS

TBC

LEGAL COST

Each party to bear their own legal costs.

EPC

Rating: TBC

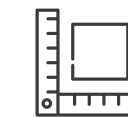
VIEWING

Please contact us.

FEATURES



Abney Park



1,500 sqft



WCs



Stoke Newington

Misdescriptions Act 1991

Whilst every effort has been made to ensure the accuracy of these particulars they are in no way guaranteed and do not and will not constitute any part of a contract or any other form of agreement. No liability shall attach to Arbor Group Ltd trading as Vibe Warehouses or its representatives in relation to anything stated or committed from these particulars. All prospective lessees purchasers are invited to and expected to inspect the property to check the accuracy of these particulars and to seek appropriate advice from their surveyor and/or solicitor.