

Creative WORKSPACE



RENT

£ 600 PCM



SIZE

612 SQFT



COLNE VALLEY BUSINESS
PARK, 16 MANCHESTER
RD, LINTHWAITE,
HUDDERSFIELD HD7

RATES INTERESTED PARTIES ARE ADVISED TO MAKE THEIR OWN ENQUIRIES TO THE LOCAL AUTHORITY.

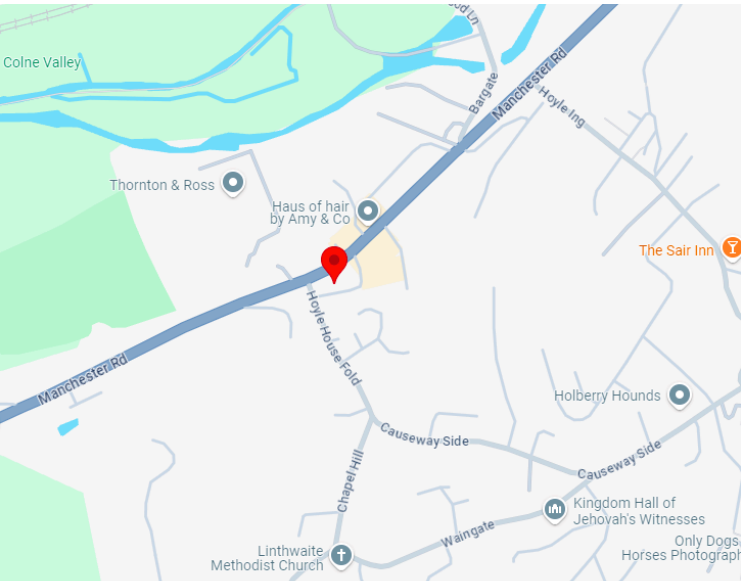
VAT NO

TERMS TO BE LET A NEW LEASE FOR A TERM TO BE AGREED.

LEGAL COST EACH PARTY TO BEAR THEIR OWN LEGAL COSTS.

EPC RATING TBC

VIEWING PLEASE CONTACT US

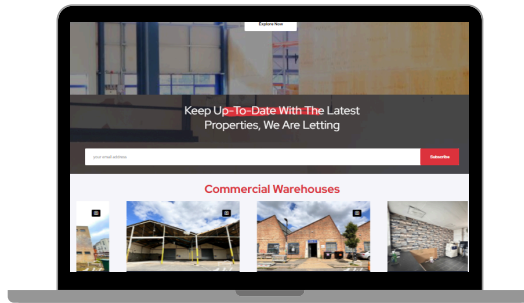


Vibe
WAREHOUSES

Creative WORKSPACE



**COLNE VALLEY BUSINESS PARK,
16 MANCHESTER RD,
LINTHWAITE, HUDDERSFIELD HD7**



Get in touch!

 **0203-935-4544**

 **www.vibewarehouses.co.uk**

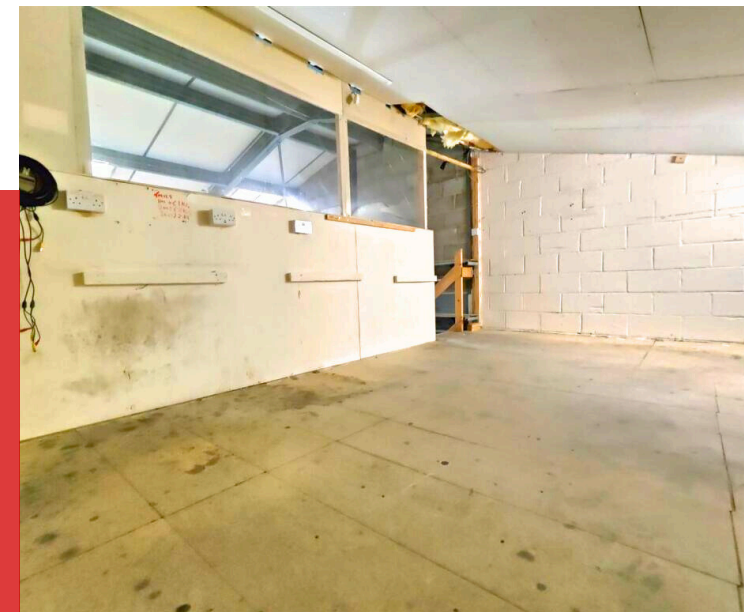
 **Harvest House, London, E5 9LU**

 **info@vibewarehouses.co.uk**



ABOUT THE PROPERTY

- Experience a dynamic workspace now available at Colne Valley Business Park, offering a lease tailored to your needs.
- Situated just a minute's walk from the Colne Valley Business Park bus stop and a four-minute drive from Slaithwaite Station. Situated within the renowned Colne Valley Business Park, nestled at the intersection of Manchester Road and Hoyle House Fold in Linthwaite. Surrounding establishments include the Premier Shop, Starlighter Studios, The Fun Factory, White Wolf Bushcraft, The Black Belt Karate Club, and more.
- Close proximity to local markets, pharmaceutical and supermarket companies, as well as dining establishments. Comprising a variety of rooms in diverse sizes and layouts, it previously housed a music school, making it ideal for similar ventures, offices, leisure-oriented businesses, and various other purposes.
- Embark on a personalized tour to discover the distinctive features of this property by scheduling a viewing appointment with us.



FEATURES



SLAITHWAITE STATION

COLNE VALLEY BUSINESS PARK

Misdescriptions Act 1991

Whilst every effort has been made to ensure the accuracy of these particulars they are in no way guaranteed and do not and will not constitute any part of a contract or any other form of agreement. No liability shall attach to Arbor Group Ltd trading as Vibe warehouses or its representatives in relation to anything stated or committed from these particulars. All prospective lessees purchasers are invited to and expected to inspect the property to check the accuracy of these particulars and to seek appropriate advice from their surveyors and/or solicitor.