

# Shop



£ 1,500 PCM



RENT

SIZE

297.97 SQFT



BATTERSEA HIGH ST,  
LONDON SW11

**RATES** INTERESTED PARTIES ARE ADVISED TO MAKE THEIR OWN ENQUIRIES TO THE LOCAL AUTHORITY.

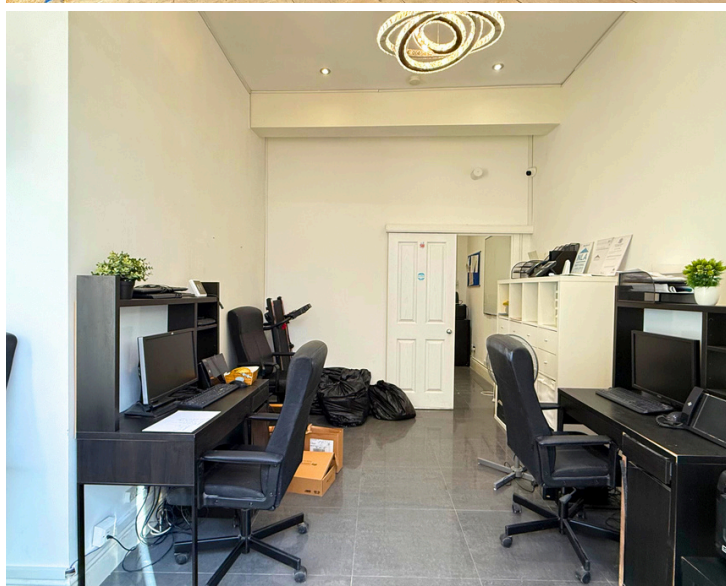
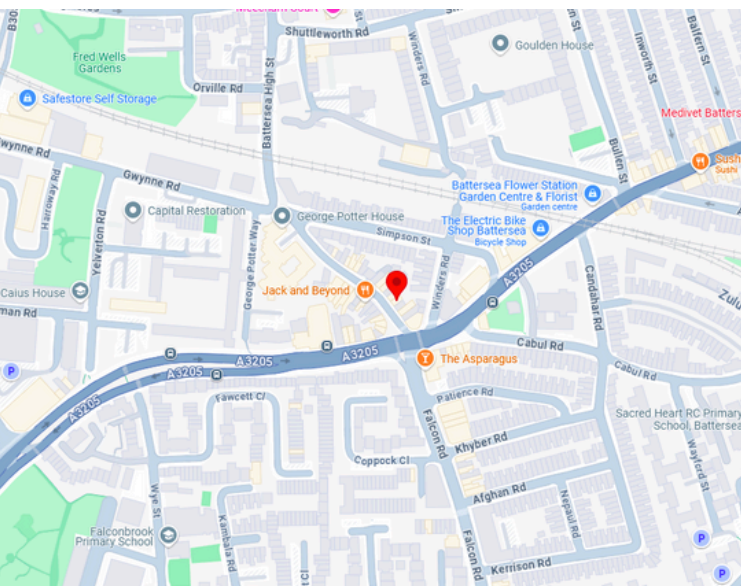
**VAT** NO

**TERMS** TO BE LET A NEW LEASE FOR A TERM TO BE AGREED.

**LEGAL COST** EACH PARTY TO BEAR THEIR OWN LEGAL COSTS.

**EPC RATING** TBC

**VIEWING PLEASE CONTACT US**



**Vibe**  
WAREHOUSES



# Shop



**BATTERSEA HIGH ST, LONDON  
SW11**



## Get in touch!



**0203-935-4544**



**[www.vibewarehouses.co.uk](http://www.vibewarehouses.co.uk)**



**Harvest House, London, E5 9LU**



**[info@vibewarehouses.co.uk](mailto:info@vibewarehouses.co.uk)**



## ABOUT THE PROPERTY

- Discover Your Next Retail Opportunity on Battersea High Street, London SW11
- This shop features two private offices, a hallway, and a restroom, all designed with functionality in mind. Located just a 2-minute walk from Battersea High Street Bus Stop and a 3-minute drive from Clapham Junction Station, the property provides excellent accessibility, ideal for business convenience. Surrounded by bustling retail shops and popular restaurants, it's set in a lively, sought-after area.
- Experience the lively atmosphere of Battersea, surrounded by bustling markets and local charm, perfect for enhancing your business's visibility and reach.
- Explore this property's unique features by arranging a personalized viewing with us.



## FEATURES



**CLAPHAM JUNCTION STATION  
BATTERSEA HIGH ST ROAD BUS  
STOP**

Misdescriptions Act 1991

Whilst every effort has been made to ensure the accuracy of these particulars they are in no way guaranteed and do not and will not constitute any part of a contract or any other form of agreement. No liability shall attach to Arbor Group Ltd trading as Vibe warehouses or its representatives in relation to anything stated or committed from these particulars. All prospective lessees purchasers are invited to and expected to inspect the property to check the accuracy of these particulars and to seek appropriate advice from their surveyors and/or solicitor.