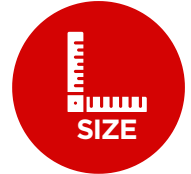


**CAMDEN ROAD, N7
LONDON**

Creative WORKSPACE



£ 1,675 pcm



590.20 SQFT

RATES INTERESTED PARTIES ARE ADVISED TO MAKE THEIR OWN ENQUIRIES TO THE LOCAL AUTHORITY.

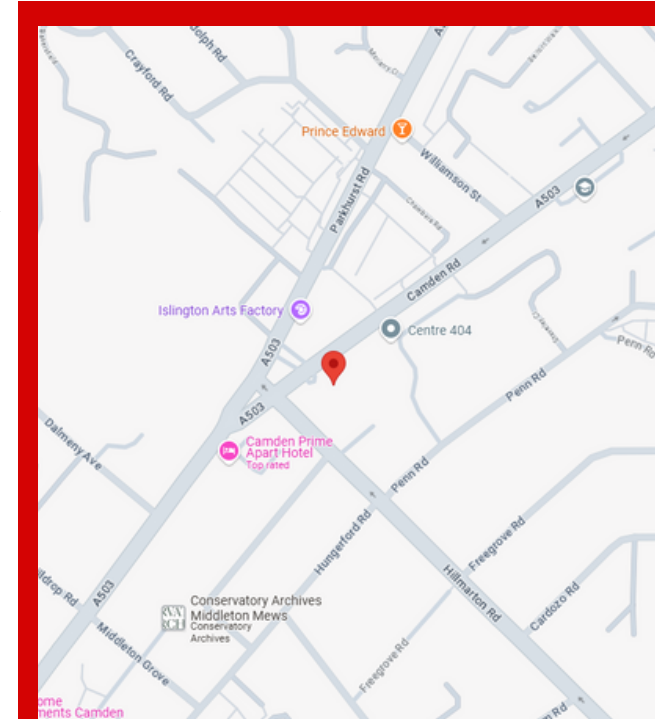
VAT TBC

TERMS TO BE LET A NEW LEASE FOR A TERM TO BE AGREED.

LEGAL COST EACH PARTY TO BEAR THEIR OWN LEGAL COSTS.

EPC RATING TBC

VIEWING PLEASE CONTACT US



www.vibewarehouses.co.uk

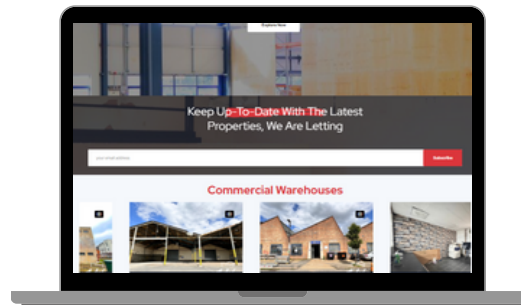


ABOUT THE PROPERTY

- Discover a spacious and adaptable 590.2 sq. ft. workspace designed to accommodate a variety of business needs. Spread across the ground floor and higher ground floor, this dynamic unit offers the perfect environment for productivity and growth.
- Located in the heart of Islington, this space is surrounded by a vibrant mix of retail shops, innovative studios, and thriving restaurants. The neighborhood is a hub of creativity, making it an excellent choice for entrepreneurs, artists, and forward-thinking professionals.
- This prime location is just a 6-minute drive to Caledonian Road Station and 11 minutes to Holloway Road Station. With elegant parks, retail stores, and restaurants nearby, the area fosters a thriving creative community, making it an excellent workspace for those looking to grow their business in an inspiring environment.
- Don't miss out on this incredible opportunity, contact us today for more details or to arrange a private viewing.



**CAMDEN ROAD, N7
LONDON**

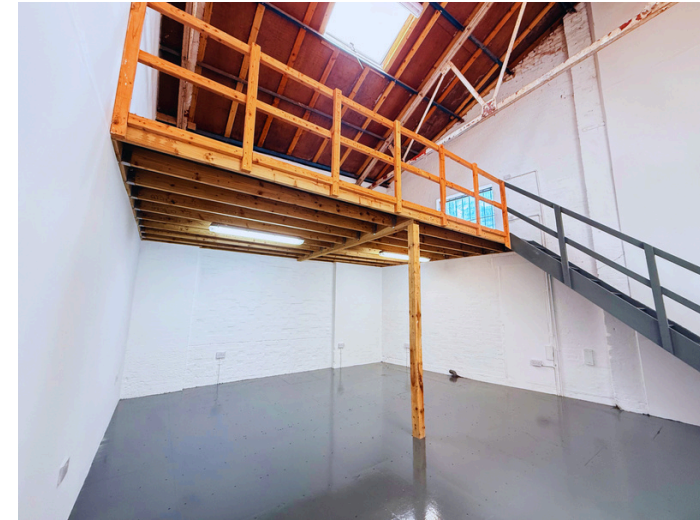


Contact Us

- 📞 **0203-935-4544**
- 🌐 **www.vibewarehouses.co.uk**
- 📍 **Harvest House, London, E5 9LU**
- ✉️ **info@vibewarehouses.co.uk**



Creative WORKSPACE



FEATURES



**CALEDONIAN ROAD STATION
HOLLOWAY ROAD**



Misdescriptions Act 1991

Whilst every effort has been made to ensure the accuracy of these particulars they are in no way guaranteed and do not and will not constitute any part of a contract or any other form of agreement. No liability shall attach to Arbor Group Ltd trading as Vibe warehouses or its representatives in relation to anything stated or committed from these particulars. All prospective lessees purchasers are invited to and expected to inspect the property to check the accuracy of these particulars and to seek appropriate advice from their surveyors and/or solicitor.